

# CANCER INCIDENCE & MORTALITY DATA SRI LANKA 2013

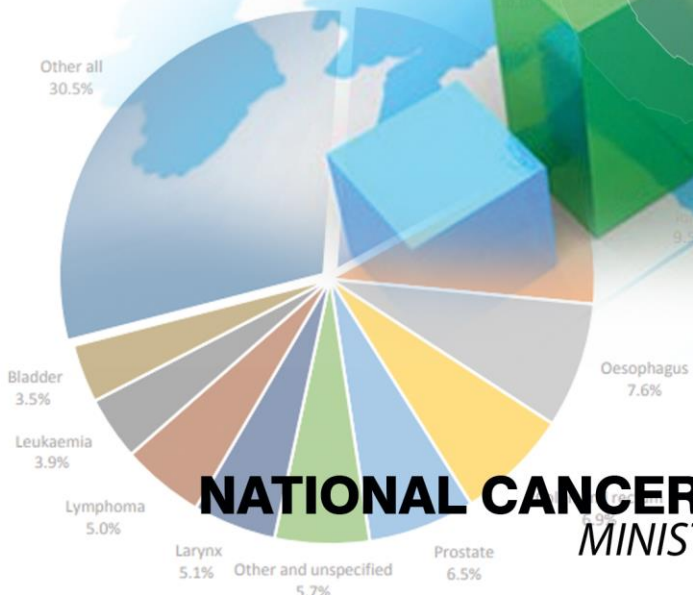


Table 07: Cancer Incidence in Sri Lanka

Sex	Number	%	CR	ASR
Male	8370	47.9	80.6	90.4
Female	9112	52.1	86.7	88.7
Total	17482	100.0	83.7	89.2



**NATIONAL CANCER CONTROL PROGRAMME**  
MINISTRY OF HEALTH

---

# National Cancer Incidence and Mortality Data

## Sri Lanka 2013



### **National Cancer Control Programme**

Ministry of Health  
555/5 Public Health Complex  
Elvitigala Mawatha,  
Narahenpita, Colombo 05  
Sri Lanka

---

15<sup>th</sup> Publication – National Cancer Incidence and Mortality Data Sri Lanka: 2013

Published date – March 2021

### **Acknowledgements**

National Advisory Committee on Prevention & Control of Cancers

World Health Organization- Country Office, Sri Lanka

Cancer Care Association – Sri Lanka

### **Compiled by**

Strategic Information and Management (SIM) Unit  
National Cancer Control Programme  
Sri Lanka

### **Published by**



National Cancer Control Programme  
Ministry of Health  
555/5 Public Health Complex  
Elvitigala Mawatha,  
Narahenpita, Colombo 05  
Sri Lanka

Contact No +94 112368627, Fax +94 112368627  
Email- [nccpsl@yahoo.com](mailto:nccpsl@yahoo.com)  
Web – [www.nccp.health.gov.lk](http://www.nccp.health.gov.lk)



National Cancer Control Programme, Sri Lanka

---

## Executive Summary

‘Cancer Incidence Data Sri Lanka – 2013’ is the 15<sup>th</sup> volume of the series of publication on cancer surveillance data of Sri Lanka. This is the output report of National Cancer Registry / Sri Lanka Cancer Registry (SLCR) based on newly reported cancers in the year 2013. The Cancer Incidence Data is collected through the government cancer treatment centres, pathology laboratories, Oral and Maxillo-Facial (OMF) surgery units in the country. As a new initiative of cancer surveillance from year 2012, the Population Based Cancer Registry (PBCR) of Colombo district was also commenced. The additional data sources considered for the Population Based Cancer Registry initiative in Colombo district were also incorporated to the national cancer registry database. All the data were entered into the CanReg 5 database. When processing the data, quality checks were conducted and duplicate entries were eliminated. Analysis was conducted using Can Reg 5 software and SPSS software.

In the year 2013, a total of 23,531 new patients with cancers were reported, giving a crude incidence rate (CR) of 114.3 per 100,000. Crude incidence rates of males and females were 114.0 /100,000 (n=11,364) and 114.6/100,000 (n=12,167). The highest 5-year age specific incidence rates were reported among males of 70-74 age group (740.4 /100,000) and females of 70-74 (442.0/100,000) age group. When age standardized rates (ASR) were considered, the overall ASR was 100.7 /100,000 and the ASR for males and females were 106.3/100,000 and 97.4/100,000 respectively. The absolute numbers, crude rates and age standardized rates were increased in relation to the similar figures of year 2012.

Lip, tongue & mouth (n=1755, ASR=16.1/100,000), Lung (n=1081, ASR = 10.2/100,000), Colon & rectum (n=835, CR=8.4/100,000) and Oesophagus (n=828, CR = 8.3/100,000) were the highest incident cancer among males. When the top ten cancers among males were considered the first four positions had remained same as the previous year.

Breast (n=3234, ASR =25.7/100,000), thyroid (n=1175, ASR = 9.8/100,000), cervix (n=895, ASR =7.0 /100,000), colorectal (n=865, CR=6.7/100,000) were the highest incident cancers among females. Thyroid cancer became the second commonest cancer among females while cervical cancer remained at third position. Compared with the 2012 data among females, colorectal cancer had come up in the list to 4<sup>th</sup> position pushing ovary cancer to 5<sup>th</sup> position.

Cumulative risk of developing cancer between the age group of 0-74 for males and females were 12.86% & 11.07% respectively. When sites of cancers were considered, highest cumulative risk of developing cancer between the age group of 0-74 males were reported for cancer of trachea, bronchus & lung (1.36%), mouth cancer (1.22%) and esophagus (0.97%). Similarly, highest cumulative risk of developing cancer between the age group of 0-74 females were reported for breast cancer (2.93%), thyroid cancer (0.88%) and cervical cancer (0.84%).

Among children and adolescents, the most common cancer was Leukemias, myeloproliferative diseases and myelodysplastic diseases(n=207), while lymphomas(n=88), CNS neoplasms(n=59), neuroblastomas and other peripheral nervous cell tumors (21) had positioned next in list respectively.

---

Mortality data received through Department of Census & Statistics and Annual Health Bulletin. A total of 7,166 (Crude death rate 71.9/100,000) and 5,788 (Crude death rate 54.5/100,000) cancer related deaths were reported among males and females respectively in the year 2013. Age specific death rates among females were lower than males and death rates were increasing over the advanced age. Malignant neoplasm of trachea, bronchus and lung is the leading cause of death among males and cancer of the breast is the leading cause of death among females.

---

## Table of Contents

	Page No
Acknowledgements	3
Executive Summary	4
Table of Contents	6
List of Tables	7
List of Figures	8
Introduction	9
Methodology	10
Cancer Incidence Data of Sri Lanka –Tables and Figures	16
Mortality of Cancers	40

## List of Tables

Table No	Description	Page No
Section 1 – Cancer Incidence Data of Sri Lanka, 2013		
01	Population of Sri Lanka: sex distribution 2006 – 2013	16
02	Cancer incidence by sex in Sri Lanka, 2006 – 2013	17
03	Cancer incidence by 5-year age groups and sex in Sri Lanka, 2013	19
04	Leading cancer sites by sex in Sri Lanka, 2013	20
05	Cancer cases by 5-year age group among Males in Sri Lanka, 2013	22
06	Cancer cases by 5-year age group among Females in Sri Lanka, 2013	26
07	Number of incidence cancers by five-year age group and site among Males in Sri Lanka, 2013	30
08	Number of incidence cancers by five-year age group and site among Females in Sri Lanka, 2013	31
09	Age specific incidence rate, Crude incidence rate, Age standardized incidence rate per 100,000 population & Cumulative risk of cancers by five-year age group and site among Males in Sri Lanka, 2013	32
10	Age specific incidence rate, Crude incidence rate, Age standardized incidence rate per 100,000 population & Cumulative risk of cancers by five-year age group and site among Females in Sri Lanka, 2013	33
11	Childhood & Adolescent (0-19) Cancer Incidence Data according to International Childhood Cancer Classification ( ICCC-3)	34
Section 2 – Cancer Mortality Data of Sri Lanka 2013		
12	Deaths due to cancers at the government hospitals in Sri Lanka, 2005-2013	40
13	Deaths due to cancers out of all registered deaths in hospitals & field in Sri Lanka, 2005 – 2013	40
14	Deaths due to cancers out of all registered deaths by sex in hospitals & field in Sri Lanka, 2005 – 2013	41
15	Leading sites (ICD-10) of cancer mortality – Male Sri Lanka 2013	42
16	Leading sites (ICD-10) of cancer mortality – Female Sri Lanka 2013	42

---

## List of Figures

Table No	Description	Page No
Section 1 – Cancer Incidence Data of Sri Lanka 2013		
01	General population in Sri Lanka by 5-year age groups in year 2013 (Population Pyramid)	16
02	Crude Cancer Incidence Rates in Sri Lanka, 2006 – 2013	18
03	Age Standardized Cancer Incidence Rates in Sri Lanka, 2006 – 2013	18
04	Cancer Incidence Rates in Sri Lanka – 2013	19
05	Age Specific Cancer Incidence rates in Sri Lanka – 2013	20
06	Proportion of leading cancers in Males in Sri Lanka – 2013	21
07	Proportion of leading cancers in Females in Sri Lanka – 2013	21
Section 2 – Cancer Mortality Data of Sri Lanka 2013		
08	Age Standardized mortality rates due to cancer in Sri Lanka, 2001 – 2013	41



## Cancer Incidence & Mortality Data Sri Lanka – 2013

### 1. Introduction

Cancer surveillance (Cancer registration) is a process of systematic, continuous collection, storage, analysis, interpretation and dissemination of epidemiological information on cancers occurring in a country or a specific geographic area. Information generated from the cancer registration is essential for planning, implementation, monitoring and evaluation of cancer control activities of the country.

The National Cancer Control Programme (NCCP) of the Ministry of Health coordinates surveillance of cancers in Sri Lanka with the active participation of other stakeholders for cancer surveillance including cancer treatment centres, pathology laboratories, Oral and Maxillo Facial (OMF) units, professional colleges, WHO country office etc. The process of surveillance of cancers is technically guided by the International Agency for Research on Cancer (IARC) of WHO and WHO IARC Regional Hub for Cancer Registration, Mumbai India. In addition, technical guidance is received from Department of Epidemiology, Biostatistics and Cancer Registry, WIA Cancer Institute, Chennai India.

The information based on surveillance of cancers is published as a publication named ‘Cancer Incidence Data Sri Lanka’. Up to now 14 volumes have been published as shown in Table 1. This publication is the 15<sup>th</sup> volume of Cancer Incidence Data Sri Lanka.

**Table (i) Summary details of previous publications of ‘Cancer Incidence Data Sri Lanka’**

Year of cancer incidence data	Data generating centres					Publication		
	Cancer Treatment Centres	Pathology laboratories	OMF units	Medical Record Rooms	Death Registrars	Total no. of centres	Volume	Year published
1985	3	—	—	—	—	<b>3</b>	1	1990
1986	3	—	—	—	—	<b>3</b>	2	1991
1987	3	—	—	—	—	<b>3</b>	3	1993
1990	3	—	—	—	—	<b>3</b>	4	1996
1995	3	—	—	—	—	<b>3</b>	5	2002
2000	4	—	—	—	—	<b>4</b>	6	2006
2001-2005	5	—	—	—	—	<b>5</b>	7	2009
2006	6	—	4	—	—	<b>10</b>	8	2012
2007	6	—	4	—	—	<b>10</b>	9	2013
2008	7	16	17	—	—	<b>40</b>	10	2014
2009	9	15	17	—	—	<b>41</b>	11	2015
2010	9	13	17	—	—	<b>39</b>	12	2016
2011	9	13	12	-	-	<b>34</b>	13	2018
2012	9	37	15	9	40	<b>110</b>	14	2020

---

## 2. Methodology

### Cancer Incidence Data

The methodology of surveillance for cancer incidence data includes (i) collection of cancer incidence data from the point of diagnosis /from the point of treatment, (ii) coding of cancer incidence data, (iii) entering of cancer incidence data to the database, (iv) duplicate checking & verification of data, (v) analysis of data and (vi) dissemination of information through the publication of ‘Cancer Incidence Data Sri Lanka’ and other modes.

The methodology of each step of cancer surveillance is described below.

#### 2.1.1 Collection of cancer incidence data

Cancer incidence data were collected from cancer treatment centres, pathology laboratories and Oral & Maxillo-Facial (OMF) units throughout the country. In addition, the

#### 2.1.1 Newly registered cancer patients at the cancer treatment centres

In the year 2013, there were 9 government cancer treatment centres involved in data collection (table i). Relevant data were extracted from cancer patients’ clinic records using ‘National Cancer Surveillance Form – H 1256’. Data were extracted by the medical officers, nursing officers and development officers attached to the cancer treatment centres, trained pre-intern medical graduates temporarily recruited through WHO Biennium funds and by the cancer registry staff of NCCP.

**Table (ii) Distribution of government cancer treatment centres in year 2013**

Category of hospital	Name of the hospital
National Hospitals	Apeksha Hospital - Maharagama (National Cancer Institute)
Teaching Hospitals	Kandy, Karapitiya, Anuradhapura, Batticaloa
Provincial General Hospitals	Badulla, Kurunegala, Rathnapura
Base Hospital	Telippalai (Jaffna)

#### 2.1.2 Newly detected cancers at the pathology laboratories

The information on newly detected cancers at the pathology laboratories were received monthly through the ‘Cancer Return Form - 1’ (H-1290). A total of 38 Histopathology laboratories (12,299 diagnosed patients), 6 Haematology laboratories (378 diagnosed patients) and one oral pathology laboratory (429 diagnosed patients) have passively sent relevant data for the year 2013 (table ii).

**Table (iii) Distribution of pathology laboratories which sent details of newly diagnosed cancer patients in year 2013**

Category of hospital	Type of Pathology laboratory		
	Histopathology	Haematology	Oral Pathology
National Hospital	National Hospital of Sri Lanka		
Teaching Hospitals	De Soysa Hospital for Women, Castle Hospital for Women, Lady Ridgeway Hospital, National Eye Hospital, Colombo South, Colombo North, National Hospital for Respiratory Diseases-Welisara, . Karapitiya, Kandy, Peradeniya, Batticaloa		
Provincial General Hospitals	Kurunegala , Rathnapura, Badulla	Kurunegala ,Badulla	
District General Hospitals	Avissawella, Gampaha, Negombo, Kalutara, Nawalapitiya, Matale, Monaragala , Chilaw, Vavuniya	Kalutara, Hambanthota, Chilaw , Monaragala	
Base Hospital	Homagama, Mulleriyawa, Wathupitiwala, Kethumathi, Balapitiya, Tangalle, Embilipitiya, Balangoda, Gampola, Karawanella		
University Units	Faculty of Medicine – Colombo, Ruhuna		Faculty of Dental Sciences – Peradeniya
Other Institutions	MRI		
Private sector	-		

---

### 2.1.3 Newly diagnosed cancers at the Oral & Maxillo - Facial (OMF) Surgery Units

Data on newly confirmed cancer patients at the Oral & Maxillo-Facial (OMF) surgery units were received annually through the Annual Notification Form of Oral Cancer (H -1294). A total of 15 OMF units have sent relevant data for year 2013 (table iii).

**Table (iv) Distribution of OMF Units which sent details of newly diagnosed cancer patients in year 2013**

Category of hospital	Name of the hospital
National Hospital	Dental Institute Colombo
Teaching Hospitals	Colombo South, Colombo North, Karapitiya, Kandy
Provincial General Hospitals	Badulla, Kurunegala, Rathnapura
District General Hospitals	Gampaha, Kalutara, Chilaw, Kegalle, Polonnaruwa
Base Hospital	Kuliyapitiya, Panadura
University Units	

### 2.1.4 Incorporation of additional cancer incidence data collected for the Population Based Cancer Registry – Colombo district

Two additional data sources were identified for capturing further cancer incidence data from Colombo district when commencing the Population Based Cancer Registry and those data sources were also incorporated as data generating centres for national cancer registry.

### Details from Medical Record Departments of Hospitals situated in Colombo district & adjacent districts

The information on cancer patients treated at the secondary and tertiary care hospitals in the government sector, private sector and armed services in the Colombo district and selected hospitals in the adjacent districts were collected through the ‘Cancer Return Form -2’ (H-1291). A total of 25 Medical Record Departments have sent the details in year 2013 (table iv). Out

**Table (v) Distribution of Medical Record Departments of Hospitals which sent details of newly diagnosed cancer patients in year 2013**

<b>Category of hospital</b>	<b>Name of the hospital</b>
National Hospital	National hospital, Dental Institute Colombo, Eye hospital, LRH, DMH, CSHW
Teaching Hospitals	Colombo South, Colombo North, Chest Hospital ,Sri Jayawardanapura
District General Hospitals	Avissawella, Gampaha ,Mulleriyawa
Base Hospital	Panadura, Horana
Private Sector hospitals	Asiri Central, Asiri Medical,Asiri Surgical,Durdans,Lanka Hospitals, Delmon, Oasis
Armed Services hospitals	Army hospital, Navy hospital, Police hospital

### **Details from Divisional Death Registrars of the Colombo district**

Details of all cancer related deaths registered by the Divisional Death Registrars of the Colombo district were received through the Cancer Return Form – 3. A total of 40 divisional death registrars have sent relevant details for the year 2013.

### **2.2 Coding of cancer incidence data**

According to the instructions of International Classification of Disease for Oncology 3<sup>rd</sup> edition (ICD-O 3), cancer incidence data were coded according to the site (Topography) and the histology (Morphology) of cancer. The cancer registry staff of the NCCP coded the cancer incidence data.

### **2.3 Entering of cancer incidence data to the database**

Cancer incidence data were entered into the CanReg5 database by the trained data entry operators attached to the NCCP. The process of data entering was closely supervised by the cancer registry staff and was regularly involved in refresher training to the data entry operators to ensure accuracy and quality of data.

---

## **2.4 Duplicate checking & verification of data**

While entering and confirming the data to the CanReg5 data base, duplicate checking was conducted using 'Person search' option of the CanReg 5 data base. In addition to the duplicate checking done through CanReg 5, further duplicate checking had to be conducted during the data verification stage as well to identify all possible duplicates.

The additional methods used were;

- i. Use of Linkpro software
- ii. Use of Excel software – Sorted according to the descending or ascending order of selected variables

After removing possible duplicates, consistency checking and verification was conducted using 'IARCcrg' tool & MS Excel.

Mismatches according to;

Age/Incidence and birthdates

Age /Site /Histology

Site /Histology

Sex/Site

Sex/Histology

Behaviour /Site

Behaviour / Histology

Grade /Histology Basis of Diagnosis /Histology were corrected.

After these procedures, preliminary analysis was conducted using CanReg 5 & SPSS to detect further mismatches. Data sources up to the patient clinic files were rechecked in the instances where mismatches were noted by the cancer registry staff of the NCCP. After identifying errors or misclassifications, necessary corrections were done before finalizing the data for analysis.

## **2.5 Analysis of cancer incidence data**

Analysis section of the CanReg 5 package, SPSS and MS Excel software were used to analyze cancer incidence data. The standard cancer registry tables described at the Cancer incidence in 5 continents (CI 5) were generated through CanReg 5 database.

The estimated population data for year 2013 for calculation cancer incidence & mortality data was received from the Department of Census & Statistics.

---

**Table (vi) Estimated population for year 2013**

	<b>Estimated Population</b>
Male	9,965,956
Female	10,619,085
Total	20,585,041

Source – Department of Census & Statistics of Sri Lanka

### **Cancer Mortality Data**

Cancer mortality data were received through two sources at national level.

- (i) Hospital Indoor Morbidity Mortality Return of Medical Statistics unit of Ministry of Health
- (ii) Cause specific death data published by the Department of Census & Statistics.

Based on the available data further analysis was conducted.

# Cancer Incidence Data of Sri Lanka

## General population Sri Lanka 2013

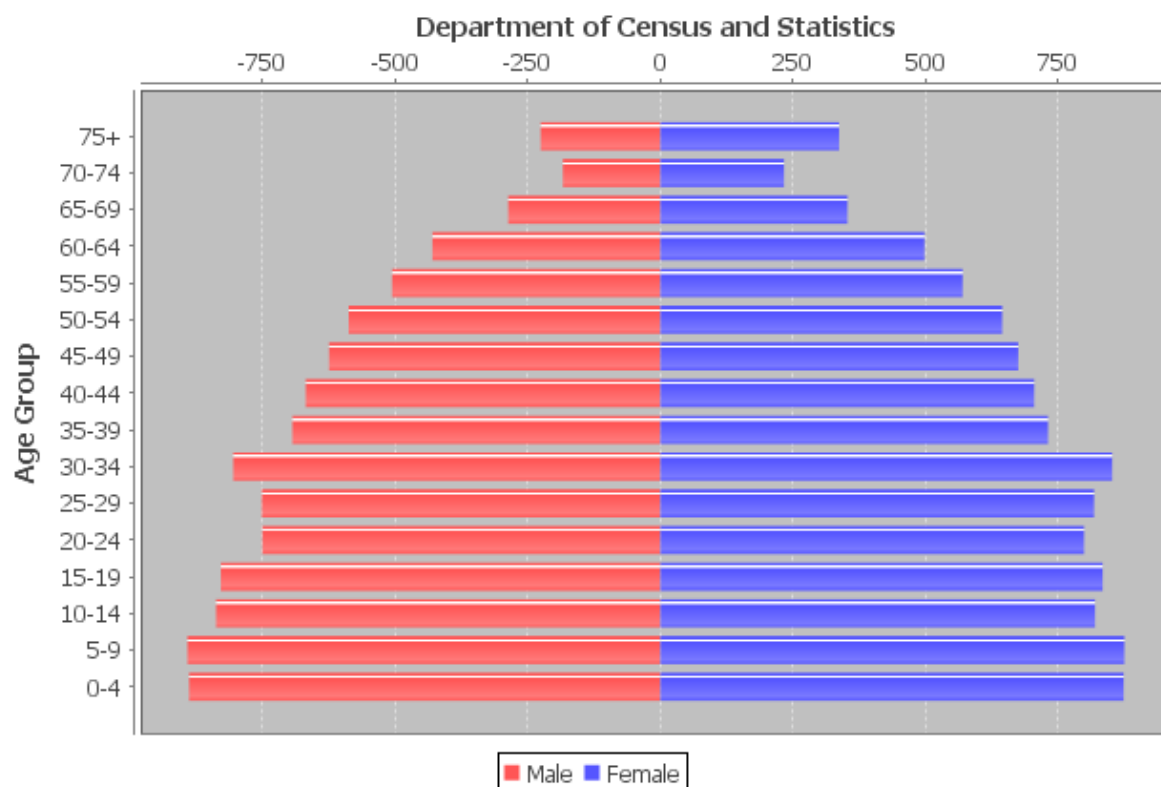


Figure 1 : General population in Sri Lanka by 5-year age groups (Population Pyramid)

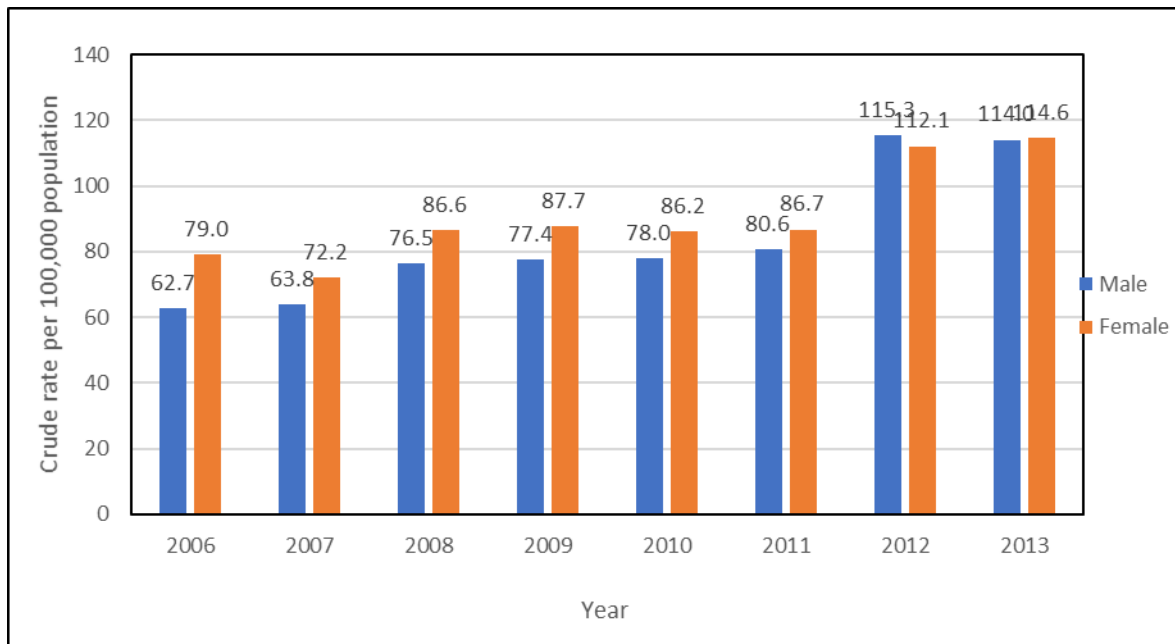
Table 1 : Population of Sri Lanka: sex distribution 2006 – 2013

	Year							
	2006	2007	2008	2009	2010	2011	2012	2013
Male ('000)	9889	9956	10060	10148	10249	10381	9856	9965
Female ('000)	9969	10083	10186	10302	10404	10511	10502	10619
Sex Ratio	99.2	98.7	98.8	98.5	98.5	98.8	93.8	93.8

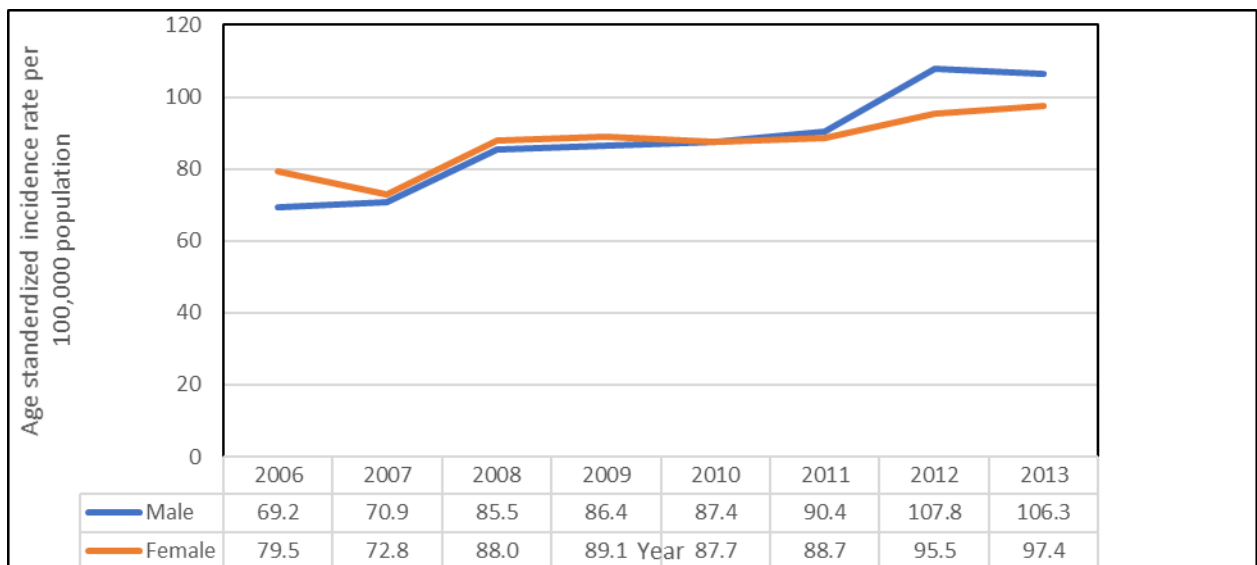


**Table 2 Cancer Incidence by sex, 2006-2013**

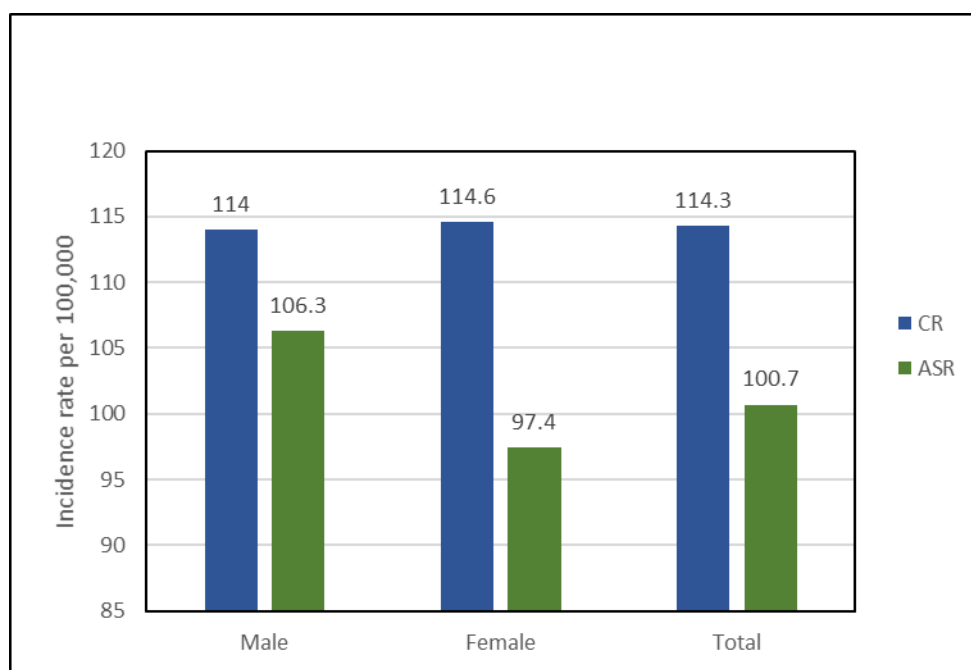
<b>Year</b>	<b>Sex</b>	<b>Number</b>	<b>%</b>	<b>CR</b>	<b>ASR</b>
<b>2006</b>	Male	6205	44.1	62.7	69.2
	Female	7875	55.9	79.0	79.5
	Total	14080		70.9	74.2
<b>2007</b>	Male	6,356	46.6	63.8	70.9
	Female	7,279	53.4	72.2	72.8
	Total	13,635		68.0	71.6
<b>2008</b>	Male	7695	46.6	76.5	85.5
	Female	8,816	53.4	86.6	88.0
	Total	16511		81.6	86.4
<b>2009</b>	Male	7858	46.5	77.4	86.4
	Female	9030	53.5	87.7	89.1
	Total	16888		82.6	87.5
<b>2010</b>	Male	7,993	47.01	78.0	87.4
	Female	8,970	52.9	86.2	87.7
	Total	16,963		82.1	87.3
<b>2011</b>	Male	8370	47.9	80.6	90.4
	Female	9,112	52.1	86.7	88.7
	Total	17482		83.7	89.2
<b>2012</b>	Male	11363	49.1	115.3	107.8
	Female	11773	50.9	112.1	95.5
	Total	23136		113.6	100.1
<b>2013</b>	Male	11364	48.3	114.0	106.3
	Female	12167	51.7	114.6	97.4
	Total	23531		114.3	100.7



**Figure 2 : Crude Cancer Incidence Rates-Sri Lanka, 2006 – 2013**



**Figure 3 : Age Standardized Cancer Incidence Rates- Sri Lanka, 2006 - 2013**



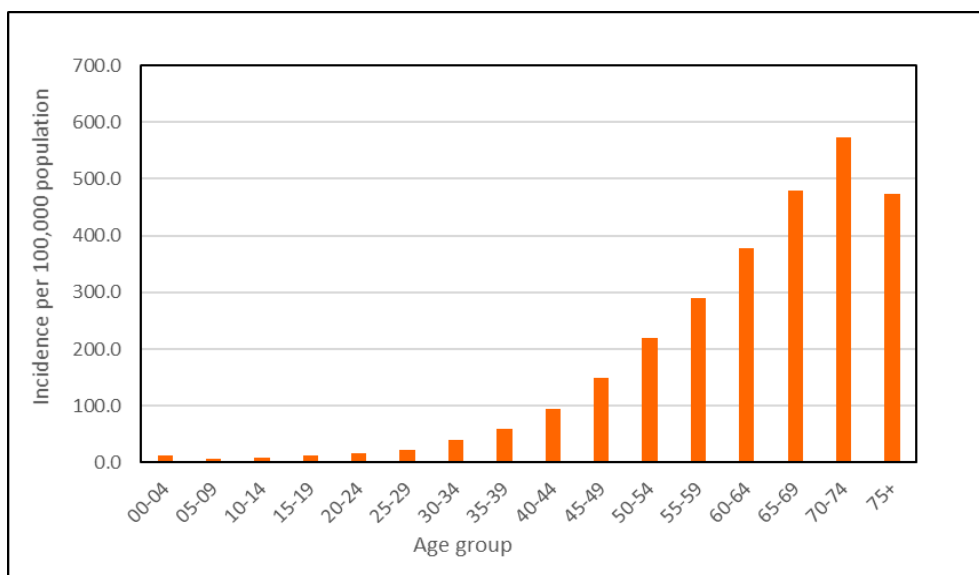
**Figure 4 : Cancer Incidence Rates in Sri Lanka - 2013**

**Table 3 Cancer incidence by 5 year age groups & sex - 2013**

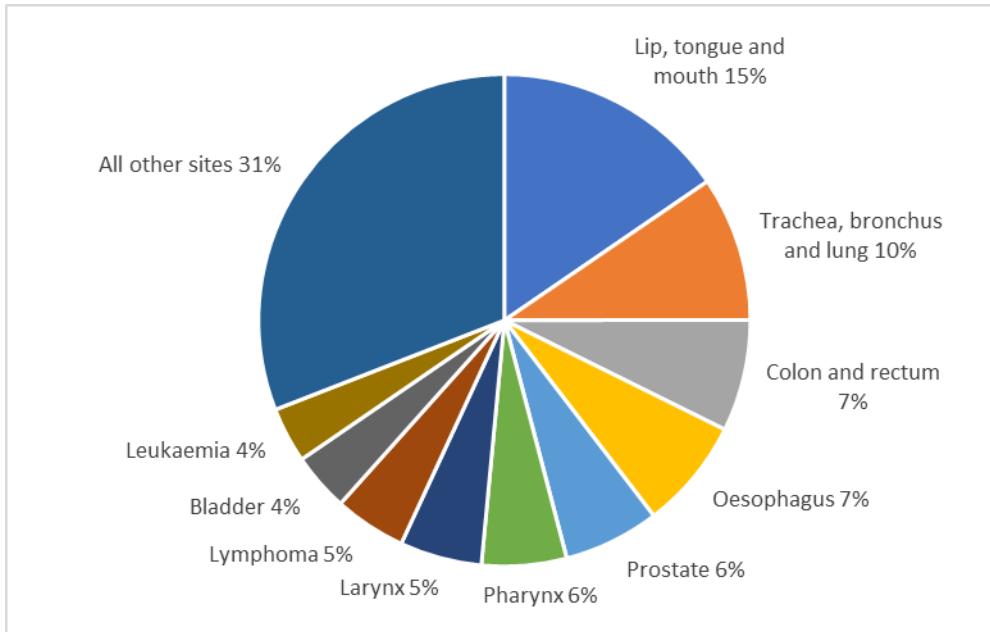
Age Group	Male			Female			Total		
	Cases	Population	Incidence	Cases	Population	Incidence	Cases	Population	Incidence
Unknown	22			27			49		
00-04	115	889230	12.9	102	874485	11.7	217	1763715	12.3
05-09	55	892056	6.2	56	875418	6.4	111	1767474	6.3
10-14	69	838363	8.2	61	820101	7.4	130	1658464	7.8
15-19	102	829051	12.3	109	833562	13.1	211	1662613	12.7
20-24	91	750463	12.1	167	799285	20.9	258	1549748	16.6
25-29	114	751731	15.2	229	818343	28.0	343	1570074	21.8
30-34	215	805683	26.7	440	851903	51.6	655	1657586	39.5
35-39	253	693603	36.5	603	731009	82.5	856	1424612	60.1
40-44	461	668902	68.9	848	705248	120.2	1309	1374150	95.3
45-49	780	624984	124.8	1167	675054	172.9	1947	1300038	149.8
50-54	1250	587732	212.7	1459	645191	226.1	2709	1232922	219.7
55-59	1509	506403	298.0	1606	569525	282.0	3115	1075928	289.5
60-64	1822	430082	423.6	1684	497822	338.3	3506	927904	377.8
65-69	1632	286828	569.0	1431	353263	405.1	3063	640091.2	478.5
70-74	1361	183810	740.4	1030	233023	442.0	2391	416832.9	573.6
75+	1514	227035	666.9	1148	335854	341.8	2662	562889	472.9
<b>Total</b>	<b>11365</b>	<b>9965956</b>	<b>114.0</b>	<b>12167</b>	<b>10619085</b>	<b>114.6</b>	<b>23532</b>	<b>20585041</b>	<b>114.3</b>

**Table 4 : Leading cancer sites by sex - 2013**

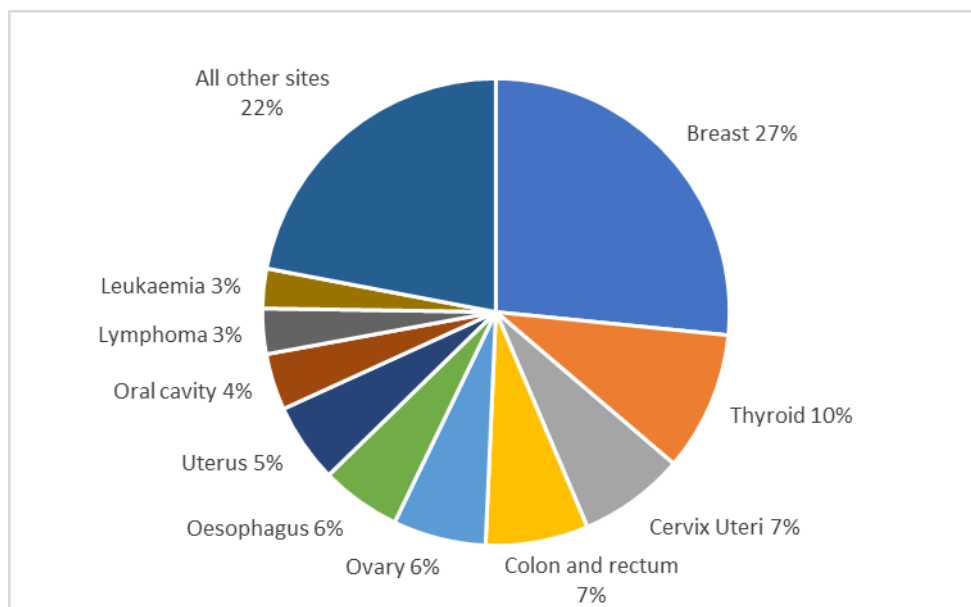
Male					Female				
ICD 10	Site	No	CR	ASR	ICD 10	Site	No	CR	ASR
C00-C06	Lip, tongue and mouth	1755	17.6	16.1	C50	Breast	3234	30.5	25.7
C33-C34	Trachea, bronchus and lung	1081	10.9	10.2	C73	Thyroid	1175	11.1	9.8
C18-C20	Colon and rectum	835	8.4	7.8	C53	Cervix Uteri	895	8.4	7.0
C15	Oesophagus	828	8.3	7.6	C18-C20	Colon and rectum	865	8.1	6.7
C61	Prostate	717	7.2	7.0	C56	Ovary	783	7.4	6.3
C09-C14	Pharynx	634	6.4	5.9	C15	Oesophagus	676	6.4	5.2
C32	Larynx	613	6.2	5.7	C54-C55	Uterus	668	6.3	5.2
C81-C86, C96	Lymphoma	537	5.4	5.1	C00-C06	Lip, tongue and mouth	476	4.5	3.7
C67	Bladder	434	4.4	4.1	C81-C86, C96	Lymphoma	382	3.6	3.2
C91-C95	Leukaemia	414	4.2	4.1	C91-C95	Leukaemia	334	3.1	3.0
<b>All sites</b>		<b>11364</b>	<b>114.0</b>	<b>106.3</b>	<b>All Sites</b>		<b>12167</b>	<b>114.6</b>	<b>97.4</b>



**Figure 5 - Age Specific Cancer Incidence rates -2013**



**Figure 6 - Proportion of leading cancers in Males in Sri Lanka – 2013**



**Figure 7 - Proportion of leading cancers in Females in Sri Lanka – 2013**

**Table 05: Cancer cases by 5 year age group among males in Sri Lanka – Male 2013**

ICD 10 code and site	Age Group																Total	
	NK	00-04	05-09	10-14	15-19	20-24	25-29	30-34	35-39	40-44	45-49	50-54	55-59	60-64	65-69	70-74		75+
C00 Lip	0	0	0	0	0	0	0	1	2	0	4	5	11	12	7	4	10	56
C01 Base of tongue	0	0	0	0	0	0	0	0	5	8	11	34	29	20	26	9	14	156
C02 Other and unspecified parts of tongue	0	0	0	0	0	0	3	6	9	28	63	68	89	67	44	34	38	449
C03 Gum	0	0	0	0	1	0	1	0	1	4	8	15	17	24	10	19	23	123
C04 Floor of mouth	0	0	0	0	0	0	1	2	1	9	15	28	17	19	23	12	14	141
C05 Palate	0	0	0	0	0	0	0	3	0	14	30	29	35	28	24	13	18	194
C06 Unspecified part of mouth	1	0	0	0	0	1	2	6	12	24	63	74	105	83	96	77	92	636
C07 Parotid gland	0	1	0	0	0	2	0	4	6	3	3	8	5	9	4	7	5	57
C08 Unspecified major salivary gland	0	0	0	0	0	0	0	2	1	1	1	5	3	1	1	1	4	20
C09 Tonsil	0	0	0	0	0	0	0	0	2	12	22	22	30	24	28	17	11	168
C10 Other oropharynx	0	0	0	0	0	0	0	1	1	7	9	18	20	24	12	14	3	109
C11 Nasopharynx	0	0	0	0	5	1	0	3	1	0	2	6	1	9	3	6	1	38
C12 Piriform sinus	0	0	0	0	0	0	0	0	0	5	17	27	24	34	27	20	17	171
C13 Hypopharynx	0	0	0	0	0	0	0	0	0	2	2	7	6	10	10	6	6	49
C14 Lip oral cavity and pharynx-unspecified	1	0	0	0	0	0	0	0	2	2	6	23	13	12	16	10	14	99
C15 Oesophagus	1	0	0	0	0	0	0	5	3	37	44	118	149	155	116	100	100	828
C16 Stomach	1	0	0	0	0	0	2	0	6	17	29	51	72	71	56	39	47	391
C17 small intestine	0	0	0	0	0	1	0	0	1	1	1	6	8	10	3	4	4	39
C18 Colon	1	0	0	0	0	1	2	10	17	22	22	45	45	53	58	43	48	367
C19 Recto sigmoid junction	0	0	0	0	0	0	0	1	1	3	5	4	4	12	8	11	12	61
C20 Rectum	1	0	0	0	0	0	5	1	8	17	25	26	56	70	52	66	80	407
C21 Anus and anal canal	0	0	0	0	0	0	1	1	0	1	1	2	7	3	12	3	4	35
C22 Liver and intra hepatic bile duct	1	5	0	1	1	0	0	0	2	4	4	15	19	42	37	41	37	209
C23 Gallbladder	1	0	0	0	0	0	0	0	0	1	1	1	2	6	3	2	1	18
C24 Unspecified part of biliary tract	0	0	0	0	0	0	0	0	0	5	6	10	8	7	5	6	6	53
C25 Pancreas	0	0	0	0	0	2	0	0	0	6	9	12	8	12	9	5	11	74
C26 Other and ill-defined digestive organs	2	0	0	0	0	0	0	1	0	0	0	0	0	4	3	4	1	15
C30 Nasal cavity and middle ear	1	3	0	0	2	0	0	2	2	2	1	2	5	9	1	5	2	37
C31 Accessory sinuses	0	0	0	0	0	0	0	0	2	1	0	3	5	5	3	4	5	28
C32 Larynx	1	0	0	0	0	0	0	4	4	15	54	76	96	118	110	65	70	613
C33 Trachea	0	0	0	0	0	0	0	0	0	0	2	2	0	2	2	0	0	8

ICD 10 code and site	Age Group																	Total	
	NK	00-04	05-09	10-14	15-19	20-24	25-29	30-34	35-39	40-44	45-49	50-54	55-59	60-64	65-69	70-74	75+		
C34	Bronchus and lung	2	0	0	0	0	0	3	6	8	19	52	108	153	229	212	150	132	1074
C37	Other thoracic organs	0	0	0	0	0	1	2	2	2	2	2	1	0	5	4	1	0	22
C38	Heart, mediastinum and pleura	0	0	1	0	0	2	7	3	2	3	2	0	3	4	0	4	0	31
C39	Other and ill-defined sites of intrathoracic organs	0	0	0	0	0	0	0	0	0	0	0	1	0	0	0	0	0	1
C40	Bone and articular cartilage of limbs	0	2	2	5	10	5	4	5	1	0	1	0	0	1	1	0	0	37
C41	Bone and articular cartilage of limbs	0	0	1	2	2	4	2	4	3	0	1	3	1	0	0	0	3	26
C43	Melanoma of skin	0	0	0	0	1	2	0	1	1	3	0	6	3	5	8	8	10	48
C44	Other skin	1	0	0	1	0	3	2	2	6	17	18	27	42	40	34	24	37	254
C45	Mesothelioma	0	0	0	0	1	0	0	1	0	0	0	0	1	1	0	1	1	6
C47	Peripheral nerves and autonomic nervous system	0	0	0	0	1	1	0	1	0	2	1	1	2	0	1	0	2	12
C48	Retroperitoneum and peritoneum	0	0	0	0	0	0	0	0	1	0	2	2	2	2	1	0	1	11
C49	Other connective and soft tissue	0	6	1	6	3	1	5	6	3	9	10	5	13	14	7	10	10	119
C50	Breast	1	0	0	0	0	0	1	2	3	2	6	7	11	15	7	0	9	64
C60	Penis	0	0	0	0	0	0	0	1	3	4	6	9	14	11	12	14	24	98
C61	Prostate	1	1	0	0	0	0	0	0	0	3	4	20	27	102	148	184	227	717
C62	Testis	0	1	2	1	1	4	8	13	5	4	7	2	1	2	1	0	2	54
C63	Other and unspecified male genital organs	0	1	0	0	0	0	1	0	0	0	0	0	0	0	1	0	1	4
C64	Kidney	0	1	2	1	2	0	0	7	8	6	20	30	26	40	29	20	28	229
C65	Renal pelvis	0	0	0	0	0	0	0	0	0	0	0	0	1	0	0	0	0	1
C66	Ureter	0	0	0	0	0	0	0	0	0	0	0	1	2	1	1	0	0	5
C67	Bladder	1	0	0	1	2	0	2	4	1	12	12	27	41	88	85	75	83	434
C68	Other and unspecified part of urinary organs	0	0	0	0	0	0	0	0	0	0	1	0	0	1	6	0	2	10
C69	Eye	0	8	1	0	0	0	0	1	0	0	0	1	2	3	3	0	1	20
C70	Meninges	0	0	0	0	0	0	0	1	1	0	1	0	2	0	0	0	0	5
C71	Brain	0	6	5	6	5	3	3	14	19	13	15	19	17	21	13	6	6	171
C72	Other parts of central nervous system	0	1	0	1	1	0	0	1	3	2	0	1	0	0	0	0	0	10
C73	Thyroid gland	0	1	0	4	1	9	1	27	35	29	17	25	31	25	17	13	13	265

ICD 10 code and site	Age Group																Total		
	NK	00-04	05-09	10-14	15-19	20-24	25-29	30-34	35-39	40-44	45-49	50-54	55-59	60-64	65-69	70-74		75+	
							8												
C74 Adrenal gland	0	8	1	0	0	0	0	1	1	1	1	1	0	2	1	1	1	19	
C75 Other endocrine glands	0	0	0	1	0	0	0	0	0	0	1	0	0	1	0	0	0	3	
C76 Other and ill defined site Unknown primary	1	4	1	0	0	0	0	1	2	1	2	3	6	7	9	4	9	50	
C81 Hodgkin disease	3	1	1	0	2	1	3	9	11	31	67	100	96	111	112	88	96	732	
C82 Follicular(nodular) non-Hodgkin lymphoma	0	1	1	3	8	1	2	5	4	9	6	8	6	7	5	3	3	0	81
C83 Diffuse non-Hodgkin lymphoma	0	0	0	0	1	1	1	1	3	1	2	3	3	7	1	0	4	28	
C84 Peripheral and cutaneous T-cell lymphoma	0	5	6	4	9	1	6	2	3	2	7	5	12	10	6	8	14	100	
C85 Other and unspecified types of non-Hodgkin lymphoma	0	0	0	0	1	0	0	1	1	0	0	3	3	2	5	4	1	21	
C86 Other and unspecified types of non-Hodgkin lymphoma	0	3	2	3	8	1	0	5	10	9	13	17	39	37	39	33	29	39	296
C88 Immunoproliferative diseases	0	0	0	0	0	0	0	0	0	0	0	0	2	0	0	1	0	0	3
C90 Multiple myeloma and malignant plasma cell neoplasm	0	0	0	0	1	0	0	0	0	2	0	0	0	0	0	0	0	0	3
C91 lymphoid leukaemia	0	0	0	0	0	0	1	2	2	4	15	20	23	38	25	33	29	192	
C92 Myeloid leukaemia	0	3	2	2	17	9	1	10	4	3	6	9	9	6	5	10	8	186	
C93 Monocytic leukaemia	0	2	2	5	13	3	7	17	10	15	13	17	21	22	21	13	12	193	
C94 Other leukaemia of specified cell type	0	2	2	1	2	0	0	0	0	1	1	1	2	1	2	3	0	18	
C95 Leukaemia of unspecified cell type	0	1	1	0	0	0	0	0	0	0	0	0	1	1	1	2	0	7	
C96 Other neoplasms of lymphoid, haematopoietic and related tissue	0	1	0	0	1	0	0	2	0	0	1	1	0	0	1	2	1	10	
C97 Other leukaemia of specified cell typeB	0	5	1	0	0	0	1	0	0	0	1	0	0	0	0	0	0	8	
D45 Polycythemia vera	0	0	0	0	0	0	0	0	1	1	0	0	2	0	2	1	0	7	
D46 Myelodysplastic syndromes	0	0	1	0	0	1	0	0	1	1	0	2	3	4	3	2	9	27	
D47 Other neoplasms of uncertain or unknown behaviour of lymphoid, haematopoietic and related tissue	0	0	0	0	0	0	0	0	0	0	0	0	0	1	1	1	1	4	



---

ICD 10 code and site	Age Group															Total		
	NK	00-04	05-09	10-14	15-19	20-24	25-29	30-34	35-39	40-44	45-49	50-54	55-59	60-64	65-69		70-74	75+
Total	22	115	55	69	102	91	114	215	253	461	780	1250	1509	1822	1632	1361	1514	11365

---

**Table 06: Cancer cases by 5 year age group among females in Sri Lanka – Female 2013**

ICD 10 code and site	Age Group																	Total	
	NK	00-04	05-09	10-14	15-19	20-24	25-29	30-34	35-39	40-44	45-49	50-54	55-59	60-64	65-69	70-74	75+		
C00 Lip		0	0	0	0	0	0	0	0	1	1	1	2	4	3	1	4	0	17
C01 Base of tongue		0	0	0	0	0	0	0	0	0	0	0	3	6	3	7	2	0	21
C02 Other and unspecified parts of tongue		0	0	0	0	1	0	0	1	6	12	13	20	20	13	17	1	0	11
																	3	0	6
C03 Gum		0	0	0	0	0	0	0	0	1	1	1	3	7	5	5	1	0	36
																	3	0	0
C04 Floor of mouth		0	0	0	0	0	0	1	0	1	1	0	0	4	3	3	0	0	13
C05 Palate		0	0	0	1	0	1	0	0	3	1	2	2	2	7	5	1	0	34
																	0	0	0
C06 Other and unspecified parts of mouth		0	0	0	0	0	1	4	5	1	6	22	24	46	32	35	5	0	23
										0							4	0	9
C07 Parotid gland		0	0	2	1	3	2	3	2	6	3	2	4	3	4	3	3	0	41
C08 Other and unspecified major salivary gland		0	0	0	0	0	0	3	0	0	1	2	1	3	2	1	1	0	14
C09 Tonsil		0	0	0	0	0	0	1	0	0	1	2	1	4	4	1	2	0	16
C10 Oropharynx		0	0	0	0	0	0	0	0	0	3	3	1	3	0	2	2	0	14
C11 Nasopharynx		0	0	0	3	1	0	0	1	1	1	1	1	1	2	1	2	0	15
C12 Pyriform sinus		0	0	0	0	0	0	0	0	1	1	1	1	5	3	2	4	0	18
C13 Hypopharynx		0	0	0	0	0	0	1	0	0	3	2	7	7	2	3	4	0	29
C14 Other and ill-defined sites		0	0	0	0	0	0	0	0	1	0	1	5	3	1	4	5	0	20
C15 Oesophagus		0	0	0	0	0	1	4	1	7	24	59	95	12	12	99	1	0	67
									1					3	1		3	0	6
C16 Stomach		0	0	1	0	1	1	1	0	8	11	16	23	28	21	23	1	0	15
																	9	0	3
C17 Small intestine		0	0	0	0	1	1	1	0	3	3	2	3	5	7	2	3	0	31
C18 Colon		0	0	0	0	1	0	1	1	3	39	58	57	58	65	50	4	2	44
								2	7	4							7	0	0
C19 Rectosigmoid junction		0	0	0	0	0	0	1	2	3	4	9	6	8	8	10	6	0	57
C20 Rectum		0	0	0	0	0	3	9	9	1	27	35	54	63	59	36	5	1	36
									8								4	0	8

ICD 10 code and site	Age Group																		
	NK	00-04	05-09	10-14	15-19	20-24	25-29	30-34	35-39	40-44	45-49	50-54	55-59	60-64	65-69	70-74	75+	Total	
C21 Anus and anal canal		0	0	0	0	0	1	0	2	2	3	5	7	2	7	4	4	0	37
C22 Liver and intrahepatic bile duct		8	1	0	0	0	0	1	0	4	2	9	9	7	11	12	1	1	84
C23 Gallbladder		0	0	0	0	0	0	0	1	1	2	9	3	4	3	6	5	0	34
C24 Other and unspecified parts of biliary tract		0	0	0	0	1	0	0	1	2	9	7	7	9	6	4	4	0	50
C25 Pancreas		0	0	0	1	0	1	1	2	7	9	10	12	12	14	3	5	0	77
C26 Other and ill-defined digestive organs		0	0	0	0	0	1	0	0	1	0	2	3	2	4	0	2	0	15
C30 Nasal cavity and middle ear		0	0	0	0	0	0	0	2	1	1	2	3	8	2	1	2	0	22
C31 Accessory sinuses		0	0	0	0	0	0	0	1	0	0	2	1	3	1	1	4	0	13
C32 Larynx		0	1	0	0	1	0	3	1	3	6	5	7	7	6	7	9	0	56
C33 Trachea		0	0	0	0	0	0	0	0	0	0	2	0	1	0	0	0	0	3
C34 Bronchus and lung		0	0	0	1	0	1	7	1	1	29	35	42	52	59	40	3	1	32
C37 Thymus		0	0	0	0	0	1	1	1	2	1	3	1	4	2	0	1	0	17
C38 Heart, mediastinum and pleura		0	1	0	0	1	0	0	0	2	1	1	0	0	1	2	0	0	9
C40 Bone and articular cartilage of limbs		0	3	5	5	2	4	1	2	1	0	3	0	3	1	0	1	0	31
C41 Bone and articular cartilage of other and unspecified sites		2	2	2	3	3	4	0	5	0	1	3	1	1	1	1	1	1	31
C43 Melanoma of skin		0	0	0	0	0	0	0	2	3	2	5	4	3	3	8	2	0	32
C44 Other malignant neoplasms of skin		0	0	0	1	1	3	3	5	3	9	19	23	29	18	33	4	1	19
C45 Mesothelioma		0	0	0	0	0	0	0	1	0	0	0	2	3	2	1	1	0	10
C47 Peripheral nerves and autonomic nervous system		1	1	0	2	0	0	1	0	0	1	0	1	0	0	0	0	0	7
C48 Retroperitoneum and peritoneum		1	0	0	1	0	0	0	0	2	1	1	2	3	1	0	0	0	12
C49 Connective, subcutaneous and other soft tissue		3	4	3	6	2	2	6	6	1	8	8	7	9	14	6	8	0	10
									0										2
C50 Breast		0	0	0	1	4	2	1	1	3	45	48	47	44	32	21	1	9	32

ICD 10 code and site		Age Group																	Total	
		NK	00-04	05-09	10-14	15-19	20-24	25-29	30-34	35-39	40-44	45-49	50-54	55-59	60-64	65-69	70-74	75+		
								8	0	8	2	9	0	8	0	2	1	8	34	
C51	Vulva								0	9	4							9		
		0	0	1	0	0	0	0	0	0	0	3	3	0	1	1	1	1	0	22
C52	Vagina																	2		
		0	0	0	0	1	0	2	1	2	3	2	5	9	6	5	9	0	45	
C53	Cervix uteri																			
		0	0	0	0	1	3	9	3	5	97	14	14	12	12	77	8	2	89	
C54	Corpus uteri								4	9		2	4	4	1		2		5	
		0	0	1	0	2	4	5	7	1	32	83	95	10	80	47	3	0	51	
C55	Uterus not specified									6				9			2		3	
		0	0	0	0	0	0	3	2	9	15	14	27	28	16	19	1	3	15	
C56	Ovary																9		5	
		3	1	7	1	1	1	3	2	5	94	11	12	92	10	42	5	1	78	
C57	Other and unspecified female genital organs				4	6	3	3	6	7		0	0		1		3		3	
		0	0	0	0	2	0	0	0	2	3	2	8	0	2	2	2	0	23	
C58	Placenta																			
		0	0	0	0	2	4	3	2	2	0	0	0	0	0	0	0	0	13	
C64	Kidney																			
		8	6	1	0	1	1	2	1	3	10	11	10	16	14	6	5	0	95	
C65	Renal pelvis																			
		0	0	0	0	0	0	0	0	0	0	0	0	1	0	0	0	0	1	
C66	Ureter																			
		0	0	0	0	0	0	0	0	0	0	0	1	1	2	0	0	0	4	
C67	Bladder																			
		0	0	0	0	0	2	0	2	3	6	8	10	17	12	18	2	0	98	
C68	Other and unspecified urinary organs																	0		
		0	0	0	0	0	0	0	1	0	0	0	0	0	1	0	0	0	2	
C69	Eye and adnexa																			
		1	1	0	0	0	0	0	0	0	0	0	0	1	3	0	1	0	23	
C70	Meninges																			
		7																		
		0	0	0	0	0	0	1	4	1	4	0	1	1	0	1	1	0	14	
C71	Brain																			
		4	1	9	7	2	1	1	9	1	19	14	11	15	7	6	4	0	15	
C72	Spinal cord, cranial nerves and other parts of central nervous system			0				0	2		1								0	
		1	1	0	3	0	0	0	0	1	1	0	0	0	0	0	0	0	7	
C73	Thyroid gland																			
		0	1	6	4	7	9	1	1	1	11	91	86	80	43	26	3	1	11	
					4	9	4	5	7	3	7						9		75	
C74	Adrenal gland							5	4	9										
		3	1	0	0	0	0	5	0	1	0	2	2	1	0	0	0	0	15	
C75	Other endocrine glands and related structures																			
		0	1	0	0	0	0	0	0	0	0	1	0	0	0	0	0	0	2	
C76	Other and ill-defined sites																			
		6	0	0	0	0	1	0	4	1	1	3	5	3	3	2	1	2	42	
																				1

ICD 10 code and site		Age Group																	Total	
		NK	00-04	05-09	10-14	15-19	20-24	25-29	30-34	35-39	40-44	45-49	50-54	55-59	60-64	65-69	70-74	75+		
C80	Unknown primary		1	0	1	0	5	6	6	1	2	33	44	62	70	72	44	5	1	43
C81	Hodgkin disease								5	2								0		2
			0	1	4	0	1	1	5	2	3	2	4	2	2	3	2	0	0	59
C82	Follicular (nodular) non-Hodgkin lymphoma		0	0	0	0	0	1	0	4	1	1	3	3	9	3	3	3	0	31
C83	Diffuse non-Hodgkin lymphoma		1	0	2	2	1	4	1	4	2	4	4	6	7	9	5	7	0	59
C84	Peripheral and cutaneous T-cell lymphoma		1	0	1	1	0	1	4	1	2	1	1	0	3	1	2	1	0	20
C85	Other and unspecified types of non-Hodgkin lymphoma		0	1	0	1	3	7	1	9	7	7	25	32	24	26	25	2	0	20
C86	Other lymphoma							0										4		1
C88	Immunoproliferative diseases		0	0	0	0	0	0	0	1	0	0	0	1	0	0	0	1	0	3
C90	Multiple myeloma and malignant plasma cell neoplasms		0	0	0	0	0	0	0	0	3	6	20	15	27	28	21	2	0	14
C91	Lymphoid leukaemia																	9		9
C92	Myeloid leukaemia		2	1	7	6	6	5	6	2	0	2	4	2	5	9	3	5	0	99
			5	2																
C93	Monocytic leukaemia		4	3	7	4	5	4	1	9	1	13	18	27	23	17	14	1	1	19
								2		2								9		2
C94	Other leukaemia of specified cell type		2	0	0	0	0	0	0	0	0	1	0	0	3	3	0	1	0	10
C95	Leukaemia of unspecified cell type		1	0	1	0	0	0	1	3	0	2	2	1	1	1	0	0	0	13
C96	Other and unspecified malignant neoplasms of lymphoid, hematopoietic and related tissue		2	1	0	1	2	0	0	2	2	1	1	2	3	1	1	1	0	20
D45	Polycythaemia vera		8	3	0	0	0	0	0	0	0	0	0	0	0	0	0	0	0	11
D46	Myelodysplastic syndromes		0	0	0	0	0	0	0	0	1	0	1	0	1	0	0	0	0	3
D47	Other neoplasms of uncertain behaviour of lymphoid, haematopoietic and related tissue		0	0	0	0	0	0	0	0	0	1	0	0	0	0	2	2	0	5
<b>Total</b>			<b>102</b>	<b>56</b>	<b>61</b>	<b>109</b>	<b>167</b>	<b>229</b>	<b>440</b>	<b>603</b>	<b>848</b>	<b>1167</b>	<b>1459</b>	<b>1606</b>	<b>1684</b>	<b>1431</b>	<b>1030</b>	<b>1148</b>	<b>27</b>	<b>12167</b>

Table 7 Number of incidence cancers by five-year age group and site among Males in Sri Lanka, 2013

Cancer Registry (2013)

General population Sri Lanka 2013

Cases by age group (Period) - Male

SITE	ALL AGE AGES UNK	0-	5-	10-	15-	20-	25-	30-	35-	40-	45-	50-	55-	60-	65-	70-	75+	(%)	ICD (10th)	
Lip	56	0	-	-	-	-	-	1	2	-	4	5	11	12	7	4	10	0.5	C00	
Tongue	605	0	-	-	-	-	3	6	14	36	74	102	118	87	70	43	52	5.4	C01-02	
Mouth	1094	1	-	-	1	1	4	11	14	51	116	146	174	154	153	121	147	9.8	C03-06	
Salivary glands	77	0	1	-	-	-	2	-	6	7	4	4	13	8	10	5	8	0.7	C07-08	
Tonsil	168	0	-	-	-	-	-	-	2	12	22	22	30	24	28	17	11	1.5	C09	
Other oropharynx	109	0	-	-	-	-	-	1	1	7	9	18	20	24	12	14	3	1.0	C10	
Nasopharynx	38	0	-	-	5	1	-	3	1	-	2	6	1	9	3	6	1	0.3	C11	
Hypopharynx	220	0	-	-	-	-	-	-	7	19	34	30	44	37	26	23	-	2.0	C12-13	
Pharynx unspecified	99	1	-	-	-	-	-	-	2	2	6	23	13	12	16	10	14	0.9	C14	
Esophagus	828	1	-	-	-	-	-	5	3	37	44	118	149	155	116	100	100	7.5	C15	
Stomach	391	1	-	-	-	-	2	-	6	17	29	51	72	71	56	39	47	3.5	C16	
Small intestine	39	0	-	-	-	1	-	-	1	1	1	6	8	10	3	4	4	0.4	C17	
Colon	367	1	-	-	-	1	2	10	17	22	22	45	45	53	58	43	48	3.3	C18	
Rectum	468	1	-	-	-	-	5	2	9	20	30	30	60	82	60	77	92	4.2	C19-20	
Anus	35	0	-	-	-	-	1	1	-	1	2	7	3	12	3	4	-	0.3	C21	
Liver	209	1	5	-	1	1	-	-	2	4	4	15	19	42	37	41	37	1.9	C22	
Gallbladder etc.	71	1	-	-	-	-	-	-	6	7	11	10	13	8	8	7	-	0.6	C23-24	
Pancreas	74	0	-	-	-	2	-	-	6	9	12	8	12	9	5	11	-	0.7	C25	
Nose, sinuses etc.	65	1	3	-	2	-	-	2	4	3	1	5	10	14	4	9	7	0.6	C30-31	
Larynx	613	1	-	-	-	-	-	4	4	15	54	76	96	118	110	65	70	5.5	C32	
Trachea, bronchus and lung	1081	2	-	-	-	-	3	6	8	19	53	110	153	231	214	150	132	9.7	C33-34	
Other thoracic organs	53	0	-	1	-	3	9	5	4	5	4	1	3	9	4	5	-	0.5	C37-38	
Bone	63	0	2	3	7	12	9	6	9	4	-	2	3	1	1	-	3	0.6	C40-41	
Melanoma of skin	48	0	-	-	1	2	-	1	1	3	-	6	3	5	8	8	10	0.4	C43	
Other skin	254	1	-	1	-	3	2	2	6	17	18	27	42	40	34	24	37	2.3	C44	
Mesothelioma	6	0	-	-	1	-	-	1	-	-	-	1	1	-	1	1	-	0.1	C45	
Kaposi sarcoma	0	0	-	-	-	-	-	-	-	-	-	-	-	-	-	-	-	0.0	C46	
Connective and soft tissue	131	0	6	1	6	4	12	5	7	3	11	11	6	15	14	8	10	1.2	C47,C49	
Breast	64	1	-	-	-	-	1	2	3	2	6	7	11	15	7	-	9	0.6	C50	
Penis	98	0	-	-	-	-	-	1	3	4	6	9	14	11	12	14	24	0.9	C60	
Prostate	717	1	1	-	-	-	-	-	3	4	20	27	102	148	184	227	-	6.5	C61	
Testis	54	0	1	2	1	1	4	8	13	5	4	7	2	1	2	1	2	0.5	C62	
Other male genital organs	4	0	1	-	-	-	-	1	-	-	-	-	-	-	1	-	1	0.0	C63	
Kidney	229	0	10	2	1	2	-	-	7	8	6	20	30	26	40	29	20	2.1	C64	
Renal pelvis	1	0	-	-	-	-	-	-	-	-	-	-	1	-	-	-	-	0.0	C65	
Ureter	5	0	-	-	-	-	-	-	-	-	-	1	2	1	1	-	-	0.0	C66	
Bladder	454	1	-	-	1	2	-	2	4	1	12	12	41	88	83	75	83	3.9	C67	
Other urinary organs	10	0	-	-	-	-	-	-	-	-	1	-	-	1	6	-	2	0.1	C68	
Eye	20	0	8	1	-	-	-	1	-	-	-	1	2	3	3	-	1	0.2	C69	
Brain, nervous system	186	0	7	5	7	6	3	3	16	23	15	16	20	19	21	13	6	1.7	C70-72	
Thyroid	265	0	1	-	4	1	9	18	27	35	29	17	25	31	25	17	13	2.4	C73	
Adrenal gland	19	0	8	1	-	-	-	-	1	1	1	1	-	2	1	1	1	0.2	C74	
Other endocrine	3	0	-	-	1	-	-	-	-	-	1	-	-	1	-	-	-	0.0	C75	
Hodgkin disease	81	0	1	1	3	8	12	5	4	9	6	8	6	7	5	3	3	0.7	C81	
Non-Hodgkin lymphoma	453	0	13	9	7	19	12	13	14	16	16	27	50	55	58	45	41	4.1	C82-85,C96	
Immunoproliferative diseases	3	0	-	-	-	1	-	-	-	2	-	-	-	-	-	-	-	0.0	C88	
Multiple myeloma	192	0	-	-	-	-	1	2	2	4	15	20	23	38	25	33	29	1.7	C90	
Lymphoid leukaemia	186	0	36	21	23	17	9	10	10	4	3	6	9	6	5	10	8	1.7	C91	
Myeloid leukaemia	218	0	5	5	6	15	3	7	17	10	16	14	18	24	24	18	12	2.0	C92-94	
Leukaemia unspecified	10	0	1	-	-	1	-	-	2	-	-	1	-	-	1	2	1	0.1	C95	
Myeloproliferative disorders	11	0	-	-	-	-	-	-	1	1	-	-	2	1	3	2	1	0.1	MPD	
Myelodysplastic syndromes	27	0	-	1	-	1	-	-	1	1	-	2	3	4	3	2	9	0.2	MDS	
Other and unspecified	812	6	5	2	-	2	1	3	11	14	32	71	108	104	124	126	96	107	7.3	O&U
All sites	11364	22	115	55	69	102	91	114	215	253	461	779	1250	1509	1822	1632	1361	1514	ALL	
All sites but C44	11110	21	115	55	68	102	88	112	213	247	444	761	1223	1467	1782	1598	1337	1477	ALLbC44	

Table built Thu Dec 31 14:53:10 IST 2020 by CanReg5.

**Table 8 Number of incidence cancers by five-year age group and site among Females in Sri Lanka,2013**

**Cancer Registry (2013)**

General population Sri Lanka 2013

Cases by age group (Period) - Female

SITE	ALL AGES	AGE UNK	0-	5-	10-	15-	20-	25-	30-	35-	40-	45-	50-	55-	60-	65-	70-	75+	(%)	ICD (10th)
Lip	17	0	-	-	-	-	-	-	-	1	1	1	2	4	3	1	4	0.1	C00	
Tongue	137	0	-	-	-	-	1	-	1	6	12	13	23	26	16	24	15	1.1	C01-02	
Mouth	322	0	-	-	1	-	2	5	5	15	9	25	29	59	47	48	77	2.7	C03-06	
Salivary glands	55	0	-	-	2	1	3	2	6	2	6	4	4	5	6	6	4	0.5	C07-08	
Tonsil	16	0	-	-	-	-	-	-	1	-	-	1	2	1	4	4	1	0.1	C09	
Other oropharynx	14	0	-	-	-	-	-	-	-	-	3	3	1	3	-	2	2	0.1	C10	
Nasopharynx	15	0	-	-	-	3	1	-	1	1	1	1	1	1	2	1	2	0.1	C11	
Hypopharynx	47	0	-	-	-	-	-	-	1	-	1	4	3	8	12	5	5	0.4	C12-13	
Pharynx unspecified	20	0	-	-	-	-	-	-	-	-	1	-	1	5	3	1	4	0.2	C14	
Oesophagus	676	0	-	-	-	-	-	1	4	11	7	24	59	95	123	121	99	5.6	C15	
Stomach	153	0	-	-	1	-	1	1	1	-	8	11	16	23	28	21	23	1.3	C16	
Small intestine	31	0	-	-	-	-	1	1	1	-	3	3	2	3	5	7	2	0.3	C17	
Colon	440	2	-	-	-	-	1	-	12	17	34	39	58	57	58	65	50	3.7	C18	
Rectum	425	1	-	-	-	-	-	3	10	11	21	31	44	60	71	67	46	3.5	C19-20	
Anus	37	0	-	-	-	-	1	-	2	2	3	5	7	2	7	4	4	0.3	C21	
Liver	84	1	8	1	-	-	-	1	4	2	9	9	7	11	12	19	19	0.7	C22	
Gallbladder etc.	84	0	-	-	-	-	1	-	2	3	11	16	10	13	9	10	9	0.7	C23-24	
Pancreas	77	0	-	-	-	1	-	1	2	7	9	10	12	12	14	3	5	0.6	C25	
Nose, sinuses etc.	35	0	-	-	-	-	-	-	3	1	1	4	4	11	3	2	6	0.3	C30-31	
Larynx	56	0	-	1	-	-	1	-	3	1	3	6	5	7	6	7	9	0.5	C32	
Trachea, bronchus and lung	330	1	-	-	-	1	-	1	7	15	14	29	37	42	53	59	40	2.8	C33-34	
Other thoracic organs	26	0	-	1	-	-	1	1	1	4	2	4	1	4	3	2	1	0.2	C37-38	
Bone	62	1	2	5	7	8	5	8	1	7	1	6	1	4	2	1	2	0.5	C40-41	
Melanoma of skin	32	0	-	-	-	-	-	-	2	3	2	5	4	3	3	8	2	0.3	C43	
Other skin	192	1	-	-	-	1	1	3	3	5	3	9	19	23	29	18	33	1.6	C44	
Mesothelioma	10	0	-	-	-	-	-	-	1	-	-	-	-	2	3	2	1	0.1	C45	
Kaposi sarcoma	0	0	-	-	-	-	-	-	-	-	-	-	-	-	-	-	-	0.0	C46	
Connective and soft tissue	109	0	4	5	3	8	2	2	7	6	10	9	8	8	9	14	6	0.9	C47,C49	
Breast	3234	9	-	-	-	1	4	28	100	189	324	459	480	478	440	322	211	189	27.0	C50
Vulva	22	0	-	-	1	-	-	-	-	3	3	3	1	1	1	1	12	0.2	C51	
Vagina	45	0	-	-	-	-	1	-	2	1	2	3	2	5	9	6	5	0.4	C52	
Cervix uteri	895	2	-	-	-	-	1	3	9	34	59	97	142	144	124	121	77	7.5	C53	
Corpus uteri	513	0	-	-	1	-	2	4	5	7	16	32	83	95	109	80	47	4.3	C54	
Uterus unspecified	155	3	-	-	-	-	-	-	3	2	9	15	14	27	28	16	19	1.3	C55	
Ovary	783	1	3	1	7	14	16	13	33	26	57	94	110	120	92	101	42	6.5	C56	
Other female genital organs	23	0	-	-	-	-	2	-	-	2	3	2	8	-	2	2	2	0.2	C57	
Placenta	13	0	-	-	-	-	2	4	3	2	2	-	-	-	-	-	-	0.1	C58	
Kidney	95	0	8	6	1	-	1	1	2	1	3	10	11	10	16	14	6	0.8	C64	
Renal pelvis	1	0	-	-	-	-	-	-	-	-	-	-	-	1	-	-	-	0.0	C65	
Ureter	4	0	-	-	-	-	-	-	-	-	-	-	-	1	1	2	-	0.0	C66	
Bladder	98	0	-	-	-	-	-	2	-	2	3	6	8	10	17	12	18	0.8	C67	
Other urinary organs	2	0	-	-	-	-	-	-	1	-	-	-	-	-	1	-	-	0.0	C68	
Eye	23	0	17	1	-	-	-	-	-	-	-	-	-	1	3	-	1	0.2	C69	
Brain, nervous system	171	0	5	11	9	10	2	10	13	13	13	24	14	12	16	7	7	1.4	C70-72	
Thyroid	1175	1	-	1	6	44	79	94	155	174	139	117	91	86	80	43	26	9.8	C73	
Adrenal gland	15	0	3	1	-	-	-	-	5	-	1	-	2	2	1	-	-	0.1	C74	
Other endocrine	2	0	-	1	-	-	-	-	-	-	-	1	-	-	-	-	-	0.0	C75	
Hodgkin disease	59	0	-	1	4	-	16	13	5	2	3	2	4	2	2	3	2	0.5	C81	
Non-Hodgkin lymphoma	322	0	10	4	3	4	4	13	15	18	12	13	33	41	43	39	35	2.7	C82-85,C96	
Immunoproliferative diseases	3	0	-	-	-	-	-	-	-	1	-	-	-	1	-	-	1	0.0	C88	
Multiple myeloma	149	0	-	-	-	-	-	-	-	3	6	6	20	15	27	28	21	1.2	C90	
Lymphoid leukaemia	99	0	25	12	7	6	6	5	6	2	-	2	4	2	5	9	3	0.8	C91	
Myeloid leukaemia	215	1	7	3	8	4	5	4	13	12	12	16	20	28	27	21	14	1.8	C92-94	
Leukaemia unspecified	20	0	2	1	-	1	2	-	-	2	1	1	2	3	1	1	1	0.2	C95	
Myeloproliferative disorders	8	0	-	-	-	-	-	-	-	1	1	1	1	1	1	2	2	0.1	MPD	
Myelodysplastic syndromes	19	0	-	-	-	-	-	-	-	1	3	1	2	3	6	3	3	0.2	MDS	
Other and unspecified	502	3	8	-	1	1	5	8	6	19	26	35	50	73	78	80	46	4.2	O&U	
All sites	12167	27	102	56	61	109	167	229	440	603	848	1167	1459	1606	1684	1431	1030	1148	ALL	
All sites but C44	11975	26	102	56	61	108	166	226	437	598	845	1158	1440	1583	1655	1413	997	1104	100.0	ALLbC44

Table built Thu Dec 31 14:53:10 IST 2020 by CanReg5.







**Table 11 Childhood & Adolescent (0-19) Cancer Incidence Data according to International Childhood Cancer Classification (ICCC-3)**

Site Group		ICD – O – 3 Histology		Male	Female	Total
<b>Leukemias, myeloproliferative diseases, and myelodysplastic diseases</b>	a. Lymphoid leukaemia	9826	Burkitt cell leukemia	1	0	1
		9835	Precursor cell lymphoblastic leukemia, NOS	61	33	94
		9836	Precursor B-cell lymphoblastic leukemia	26	14	40
		9837	Precursor T-cell lymphoblastic leukemia	9	3	12
	b. Acute myeloid leukaemia	9840	Acute myeloid leukemia, M6 type	1	0	1
		9861	Acute myeloid leukemia, NOS	6	9	15
		9867	Acute myelomonocytic leukemia	2	1	3
		9872	Acute myeloid leukemia, minimal differentiation	1	0	1
		9873	Acute myeloid leukemia without maturation	1	1	2
		9874	Acute myeloid leukemia with maturation	6	5	11
		9891	Acute monocytic leukemia	6	1	7
	9910	Acute megakaryoblastic leukemia	1	2	3	
	c. Chronic myeloproliferative diseases	9863	Chronic myeloid leukemia, NOS	6	2	8
	d. Myelodysplastic syndrome and other myeloproliferative diseases	9946	Juvenile myelomonocytic leukemia	1	1	2
		9983	Refractory anemia with excess blasts	1	0	1
e. Unspecified and other specified leukaemia	9800	Leukemia, NOS	1	2	3	
	9801	Acute leukemia, NOS	1	2	3	
<b>Total</b>				<b>131</b>	<b>76</b>	<b>207</b>
<b>Lymphomas and reticuloendothelial neoplasms</b>	a. Hodgkin lymphomas	9650	Hodgkin lymphoma, NOS	7	2	9
		9651	Hodgkin lymphoma, lymphocyte-rich	0	1	1
		9652	Hodgkin lymphoma, mixed cellularity, NOS	3	1	4
		9653	Hodgkin lymphoma, lymphocyte depletion, NOS	0	1	1
		9663	Hodgkin lymphoma, nodular sclerosis, NOS	3	0	3

Site Group		ICD – O – 3 Histology	Male	Female	Total	
b. Non-Hodgkin lymphomas(except Burkitt lymphoma)	9591	Malignant lymphoma, non-Hodgkin, NOS	14	2	16	
	9680	Malignant lymphoma, large B-cell, diffuse, NOS	8	2	10	
	9690	Follicular lymphoma, NOS	1	0	1	
	9699	Marginal zone B-cell lymphoma, NOS	1	0	1	
	9702	Mature T-cell lymphoma, NOS	1	0	1	
	9714	Anaplastic large cell lymphoma, T cell and	0	3	3	
	9727	Precursor cell lymphoblastic lymphoma, NOS	10	2	12	
	9729	Precursor T-cell lymphoblastic lymphoma	3	1	4	
c. Burkitt lymphoma	9687	Burkitt lymphoma, NOS	3		3	
d. Miscellaneous lymphoreticular neoplasms	9750	Malignant histiocytosis	0	1	1	
	9754	Langerhans cell histiocytosis, disseminated	6	10	16	
e. Unspecified lymphomas	9590	Malignant lymphoma, NOS	2		2	
			2		2	
<b>Total</b>			<b>62</b>	<b>26</b>	<b>88</b>	
<b>CNS and miscellaneous intracranial and intraspinal neoplasms</b>	a. Ependymomas and choroid plexus tumour	9390	Choroid plexus carcinoma	1	0	1
		9391	Ependymoma, NOS	1	4	5
		9392	Ependymoma, anaplastic	1	1	2
	b. Astrocytoma	9380	Glioma, malignant	1	1	2
		9400	Astrocytoma, NOS	3	3	6
		9401	Astrocytoma, anaplastic	0	2	2
		9420	Fibrillary astrocytoma	1	1	2
		9440	Glioblastoma, NOS	3	6	9
	c. Intracranial and intraspinal embryonal tumours	9470	Medulloblastoma, NOS	5	3	8
		9471	Desmoplastic nodular medulloblastoma	0	1	1
		9473	Primitive neuroectodermal tumor, NOS	0	5	5

Site Group	ICD – O – 3 Histology		Male	Female	Total
d. Other gliomas	9380	Glioma, malignant	6	6	12
	9450	Oligodendroglioma, NOS	0	1	1
e. Other specified intracranial and intraspinal neoplasms	9362	Pineoblastoma		1	1
f. Unspecified intracranial and intraspinal neoplasms	8000	Neoplasm, malignant		2	2
<b>Total</b>			<b>22</b>	<b>37</b>	<b>59</b>
<b>Neuroblastoma and other peripheral nervous cell tumours</b>					
a. Neuroblastoma and ganglioneuroblastom	9490	Ganglioneuroblastoma	0	1	1
	9500	Neuroblastoma, NOS	15	5	20
<b>Total</b>			<b>15</b>	<b>6</b>	<b>21</b>
Retinoblastoma	V. Retinoblastoma	9510 Retinoblastoma, NOS	9	17	26
<b>Total</b>			<b>9</b>	<b>17</b>	<b>26</b>
<b>Renal tumours</b>	a. Nephroblastoma and other nonepithelial renal tumours	8960 Nephroblastoma, NOS	9	12	21
		8963 Malignant rhabdoid tumor	1	0	1
		8964 Clear cell sarcoma of kidney	0	3	3
	B. Renal carcinomas	8260 Papillary adenocarcinoma, NOS	1	0	1
		8310 Clear cell adenocarcinoma, NOS	1	0	1
		8312 Renal cell carcinoma, NOS	1	0	1
<b>Total</b>			<b>13</b>	<b>15</b>	<b>28</b>
<b>Hepatic tumours</b>	a. Hepatoblastoma	8970 Hepatoblastoma	6	9	15
	b. Hepatic carcinomas	8140 Adenocarcinoma, NOS	1	0	1
<b>Total</b>			<b>7</b>	<b>9</b>	<b>16</b>
<b>Malignant bone tumours</b>	a. Osteosarcoma	9180 Osteosarcoma, NOS	17	9	26
		9181 Chondroblastic osteosarcoma	1	0	1
	b. Chondrosarcoma	9230 Chondroblastoma, malignant	0	1	1

Site Group	ICD – O – 3 Histology	Male	Female	Total
c. Ewing tumours and related sarcomas of bone	9260 Ewing sarcoma	5	10	15
d. Other specified malignant bone tumours	9250 Giant cell tumor of bone, malignant	1	0	1
	9370 Chordoma, NOS	1	0	1
e. Unspecified malignant bone tumours	8000 Neoplasm, malignant	0	1	1
	8800 Sarcoma, NOS	0	1	1
<b>Total</b>		<b>25</b>	<b>22</b>	<b>47</b>

**Soft tissue and other extraosseous sarcoma**

a. Rhabdomyosarcoma	8900 Rhabdomyosarcoma, NOS	2	4	6
	8910 Embryonal rhabdomyosarcoma, NOS	4	2	6
	8912 Spindle cell rhabdomyosarcoma	1	0	1
	8920 Alveolar rhabdomyosarcoma	0	1	1
b. Fibrosarcomas, peripheral nerve sheath tumours, and other fibrous neoplasms	8811 Fibromyxosarcoma	0	1	1
	9540 Malignant peripheral nerve sheath tumor	3	1	4
	9561 Malig. peripheral nerve sheath tumor, rhabdomyoblastic differentiation	0	1	1
	9580 Granular cell tumor, malignant	0	1	1
d. Other specified soft tissue sarcomas	8806 Desmoplastic small round cell tumor	3	1	4
	8963 Malignant rhabdoid tumor	0	1	1
	9040 Synovial sarcoma, NOS	2	2	4
	9041 Synovial sarcoma, spindle cell	1	0	1
	9043 Synovial sarcoma, biphasic	1	0	1
	9120 Hemangiosarcoma	1	0	1
	9130 Hemangioendothelioma, malignant	0	1	1
	9252 Malignant tenosynovial giant cell tumor	0	1	1
	9260 Ewing sarcoma	0	1	1
	9364 Peripheral neuroectodermal tumor	1	0	1

Site Group	ICD – O – 3 Histology		Male	Female	Total
e. Unspecified soft tissue sarcomas	8800	Sarcoma, NOS	4	1	5
	8801	Spindle cell sarcoma	1	1	2
<b>Total</b>			<b>24</b>	<b>20</b>	<b>44</b>

**Germ cell tumours, trophoblastic tumours, and neoplasms of gonads**

a. Intracranial and intraspinal germ cell tumours	9080	Teratoma, malignant, NOS	1		1
b. Malignant extracranial and extragonadal germ cell tumours	9080	Teratoma, malignant, NOS	1	3	4
	9085	Mixed germ cell tumor	0	2	2
c. Malignant gonadal germ cell tumours	9060	Dysgerminoma	0	4	4
	9064	Germinoma	0	2	2
	9071	Yolk sac tumor	2	3	5
	9080	Teratoma, malignant, NOS	1	6	7
	9085	Mixed germ cell tumor	1	2	3
d. Gonadal carcinoms	8441	Serous cystadenocarcinoma, NOS		1	1
	8460	Papillary serous cystadenocarcinoma		1	1
	8461	Serous surface papillary carcinoma		1	1
	8470	Mucinous cystadenocarcinoma, NOS		2	2
	8480	Mucinous adenocarcinoma		1	1
e. Other and unspecified malignant gonadal tumours	8000	Neoplasm, malignant		2	2
<b>Total</b>			<b>6</b>	<b>30</b>	<b>36</b>

**Other malignant epithelial neoplasms and malignant melanomas**

a. Adrenalcortical carcinomas	8370	Adrenal cortical carcinoma	2	1	3
b. Thyroid carcinomas	8260	Papillary adenocarcinoma, NOS	5	31	36
	8290	Oxyphilic adenocarcinoma	0	1	1
	8330	Follicular adenocarcinoma, NOS	0	6	6

Site Group	ICD – O – 3 Histology	Male	Female	Total
	8335 Follicular carcinoma, minimally invasive	0	1	1
	8337 Insular carcinoma	0	1	1
	8340 Papillary carcinoma, follicular variant	1	8	9
	8341 Papillary microcarcinoma	0	2	2
c. Nasopharyngeal carcinomas	8010 Carcinoma, NOS	1	1	2
	8072 Squamous cell carcinoma, large cell, nonkeratin	2	0	2
d. Malignant melanomas	8720 Malignant melanoma, NOS (except juvenile melanoma)	1	1	2
e. Skin carcinomas	8071 Squamous cell carcinoma, keratinizing, NOS	1	0	1
	8402 Nodular hidradenoma, malignant	0	1	1
f. Other and unspecified carcinomas	8010 Carcinoma, NOS	2	0	2
	8050 Papillary carcinoma, NOS	0	1	1
	8070 Squamous cell carcinoma, NOS	2	1	3
	8130 Papillary transitional cell carcinoma	3	0	3
	8140 Adenocarcinoma, NOS	1	1	2
	8430 Mucoepidermoid carcinoma	0	4	4
	8452 Solid pseudopapillary carcinoma	0	1	1
	8480 Mucinous adenocarcinoma	1	0	1
	8500 Infiltrating duct carcinoma, NOS	0	1	1
<b>Total</b>		<b>22</b>	<b>63</b>	<b>85</b>
<b>Other and unspecified malignant neoplasms</b>				
a. Other specified malignant tumours	9050 Mesothelioma, malignant	1		1
b. Other unspecified malignant tumours	8000 Neoplasm, malignant	3	6	9
	8004 Malignant tumor, spindle cell type	1	1	2
<b>Total</b>		<b>5</b>	<b>7</b>	<b>12</b>

## Mortality of Cancers

Mortality data due to cancers were obtained through the (i) Annual Health Bulletin based on Indoor morbidity mortality return (IMMR) from the hospital statistics and (ii) Department of Census & Statistics website based on data derived from the vital registration system of Sri Lanka.

**Table 12 : Deaths due to neoplasms at the government hospitals in Sri Lanka 2005-2013**

Year	No. of hospital deaths due to cancers	Crude hospital annual death rate due to cancers per 100,000 population	Proportionate Mortality Ratio (PMR) out of all hospital deaths
2005	2753	14.0	8.3
2006	3241	16.3	9.9
2007	3498	17.5	10.1
2008	3485	17.2	9.8
2009	3774	18.5	10.0
2010	4449	21.5	11.1
2011	4631	22.2	11.8
2012	4519	22.2	11.6
2013	4539	22.2	11.2

*Sources: Annual Health Bulletin 2005 to 2013.*

**Table 13 : Deaths due to neoplasms out of all registered deaths (hospital & field) 2001 – 2013 in Sri Lanka**

Year	Population	Cancer deaths		
		No.	CR	PMR (%)
2001	18,797,000	8,063	42.9	7.1
2002	18,921,000	7,986	42.2	7.1
2003	19,173,000	8,396	43.8	7.3
2004	19,435,000	9,127	47.0	7.9
2005	19,644,000	9,403	47.9	7.1
2006	19,958,000	10,386	52.3	8.8
2007	20,039,000	10,631	53.1	8.9
2008*				
2009	20,450,000	11,286	55.2	8.8
2010	20,653,000	11,836	57.3	9.1
2011	20,892,000	12,267	58.7	10.0
2012	20,359,439	12,581	61.8	10.2
2013	20,585,041	12,954	62.9	10.2

\* Not published

*CR-Crude annual death rate due to cancers per 100,000 population*

*PMR – Proportionate Mortality Ratio out of total deaths*



**Table 14: Deaths due to cancers out of all registered deaths by sex in hospitals & field in Sri Lanka, 2005 – 2013**

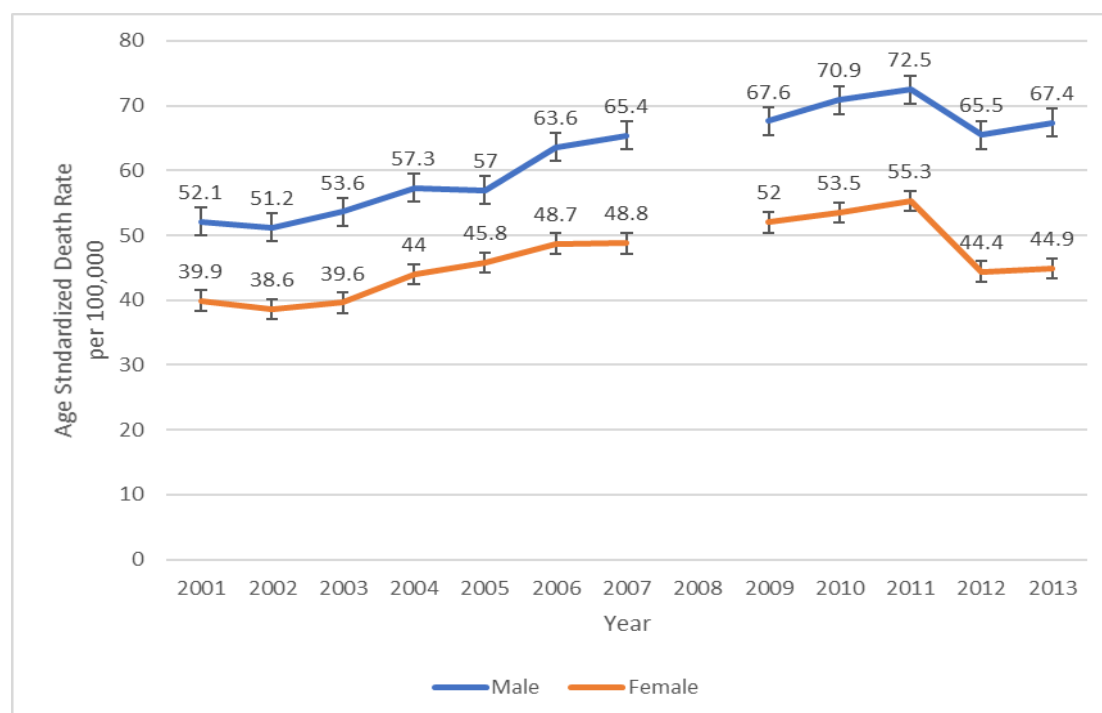
Year	Male			Female		
	No.	CR	ASR	No.	CR	ASR
2001	4375	46.7	52.1	3688	39.1	39.9
2002	4350	46.5	51.2	3636	37.9	38.6
2003	4614	48.7	53.6	3782	38.9	39.6
2004	4942	57.1	57.3	4185	42.9	44.0
2005	4983	50.9	57.0	4420	44.8	45.8
2006	5644	57.1	63.6	4742	47.6	48.7
2007	5827	58.5	65.4	4804	47.6	48.8
2008*						
2009	6105	60.2	67.6	5181	50.3	52.0
2010	6438	62.8	70.9	5398	51.9	53.5
2011	6641	64.0	72.5	5626	53.5	55.3
2012	6908	70.1	65.5	5673	54.0	44.4
2013	7166	71.9	67.4	5788	54.5	44.9

Sources: Department of Census & Statistics

\* Not published

CR-Crude annual death rate due to cancers per 100,000 population

ASR – Age standardized annual death rate due to cancers per 100,000 population



**Figure 8 - Age standardized mortality rates due to cancers in Sri Lanka 2001 -2013**

**Table 15 Leading sites (ICD-10) of cancer mortality – Male Sri Lanka 2013**

Type of Cancer	No	%	CR	ASR
1-034 Malignant neoplasm of trachea, bronchus and lung	902	12.6	9.1	8.5
1-027 Malignant neoplasm of lip, oral cavity and pharynx	863	12.0	8.7	8.1
1-031 Malignant neoplasm of liver and intrahepatic bile ducts	491	6.9	4.9	4.7
1-028 Malignant neoplasm of oesophagus C15	371	5.2	3.7	3.4
1-045 Leukaemia C91-C95	314	4.4	3.2	3.1
1-029 Malignant neoplasm of stomach C16	272	3.8	2.7	2.5
1-042 Malignant neoplasm of meninges , brain and other parts of central nervous system	251	3.5	2.5	2.4
1-030 Malignant neoplasm of colon, rectum and anus C18-C21	205	2.9	2.1	1.9
1-040 Malignant neoplasm of Prostate C61	159	2.2	1.6	1.5
1-043 Non-Hodgkin s lymphoma C82-C85	154	2.1	1.5	1.4
1-026 Neoplasms C00-D48	<b>7166</b>	<b>100.0</b>	<b>71.9</b>	<b>67.4</b>

**Table 16 Leading sites (ICD-10) of cancer mortality – Female Sri Lanka 2013**

Type of Cancer	No	%	CR	ASR
1-036 Malignant neoplasm of breast	688	11.9	6.5	5.3
1-034 Malignant neoplasm of trachea, bronchus and lung	331	5.7	3.1	2.6
1-038 Malignant neoplasm of other and unspecified parts of uterus	294	5.1	2.8	2.2
1-027 Malignant neoplasm of lip, oral cavity and pharynx	289	5.0	2.7	2.1
1-045 Leukaemia C91-C95	284	4.9	2.7	2.4
1-028 Malignant neoplasm of oesophagus C15	242	4.2	2.3	1.9
1-029 Malignant neoplasm of stomach C16	234	4.0	2.2	1.8
1-042 Malignant neoplasm of meninges , brain and other parts of central nervous system	220	3.8	2.1	1.8
1-039 Malignant neoplasm of ovary C56	213	3.7	2.0	1.7
1-031 Malignant neoplasm of liver and intrahepatic bile ducts	207	3.6	1.9	1.6
1-030 Malignant neoplasm of colon, rectum and anus C18-C21	167	2.9	1.6	1.3
1-026 Neoplasms C00-D48	<b>5788</b>	<b>100.0</b>	<b>54.5</b>	<b>44.9</b>



National Cancer Control Programme  
Ministry of Health  
555/5 Public Health Complex  
Elvitigala Mawatha,  
Narahenpita, Colombo 05  
Sri Lanka